

THREE PHASE & MULTIPLE MPPT

SE 110KTL-M3/125KTL-MH3

Application: Large-scale Industrial and Commercial Sites



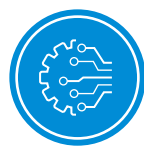
SUPERIOR EFFICIENCY

- Maximum efficiency 98.8%
- Compatible with high power modules (500W/600W+)
- 150% PV configuration, 110% output overload



HIGH RELIABILITY

- Integrated type II DC/AC SPD, AFCI detection optional
- IP66 waterproof and dustproof, C5 anti-corrosion
- High quality components use



INTELLIGENT MAINTENANCE

- String level I/V detect (Optional)
- Remote configuration and upgrade
- Supports export control

	SE 110KTL-M3	SE 125KTL-MH3
Efficiency		
Max. Efficiency	98.6%	98.8%
European Efficiency	98.2%	98.4%
Input (PV)		
Max. Input Voltage	1100V	
Max. PV configuration	150%	
Rated Input Voltage	620V	
Max. Input Current	3*40A+6*32A	
Max. Short Circuit Current	3*50A+6*45A	
Start Input Voltage/ Min. Operating Voltage	250V / 200V	
MPPT Operating Voltage Range	200V-1000V	
Max. Number of PV Strings	18 (9*2)	
No. of MPPTs	9	
Output (Grid)		
Rated AC Active Power	110,000W	125,000W
Max. AC Apparent Power	121,000VA	137,500VA
Max. AC Active Power (PF=1)	121,000W	137,500W
Max. AC Output Current	3*185.9A	3*165.5A
Rated AC Voltage	400V, 3W+N+PE	480V, 3W+PE
AC Voltage Range*	277V-520V (Adjustable)	300V-550V (Adjustable)
Rated Grid Frequency	50Hz / 60Hz	
Grid Frequency Range**	45Hz-55Hz / 55Hz-65Hz (Adjustable)	
THDI	<3% (Rated Power)	
DC Current Injection	<0.5%In	
Power Factor	> 0.99 Rated power (Adjustable 0.8 LD - 0.8 LG)	
Protection		
DC switch	Support	
Anti-islanding protection	Support	
AC overcurrent protection	Support	
AC short circuit protection	Support	
DC reverse connection	Support	
Surge Arrester	DC Type II / AC Type II	
Insulation detection	Support	
Leakage current protection	Support	
AFCI	Optional	
PID Recovery	Optional	
PV String monitoring	Optional	
Night load consumption monitoring	Optional	
General		
Topology	Transformerless	
IP Rating	IP66	
Night Self Consumption	<10W	
Cooling	Fan cooling	
Operating Temperature Range	-25°C-60°C	
Relative Humidity Range	0-100%	
Max. Operating Altitude	4000m	
Noise	<75dB	
Dimensions (W*H*D)	850mm*670mm*356mm	
Weight	85Kg	
HMI & COM		
Display	Wireless & APP +LED, LCD (Optional)	
Communication	RS 485, Optional: WiFi / GPRS / 4G / LAN	
Certification		
Safety	IEC62109-1, IEC62109-2	
Grid Code	EN 50549-1/-2, IEC 61727/62116, VDE-AR-N 4105, CEI 0-21/16, UNE 206006/206007-1, UNE 217001, AS 4777	
Warranty	5 Years	

Remarks:

- The range of output voltage and frequency may vary depending upon different grid codes.
- Specifications are subject to change without advance notice.