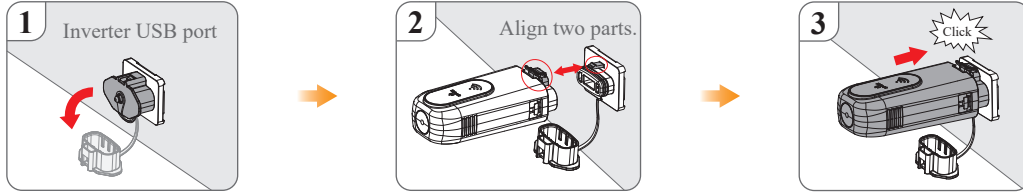


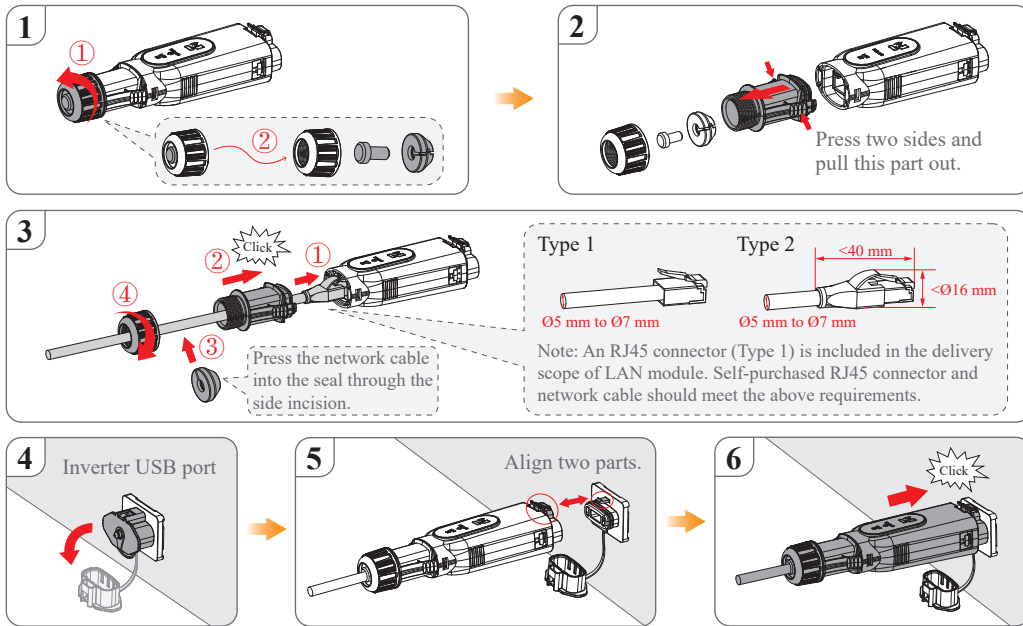
# Wi-Fi/LAN/4G Module Installation Guide

## 1 Module Installation

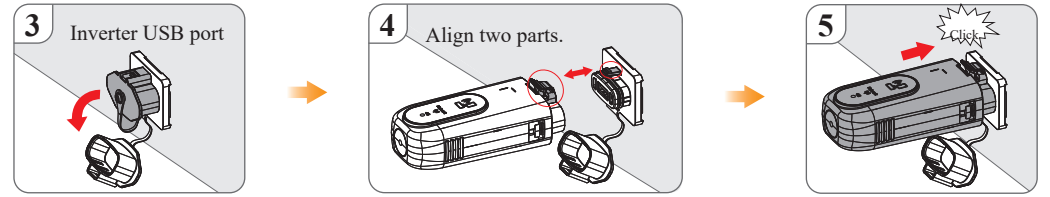
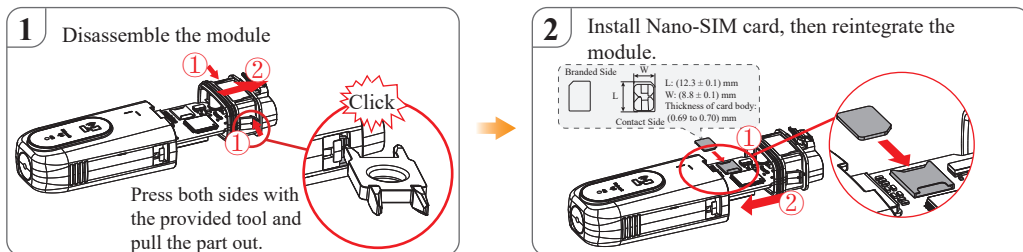
### Wi-Fi Module Installation



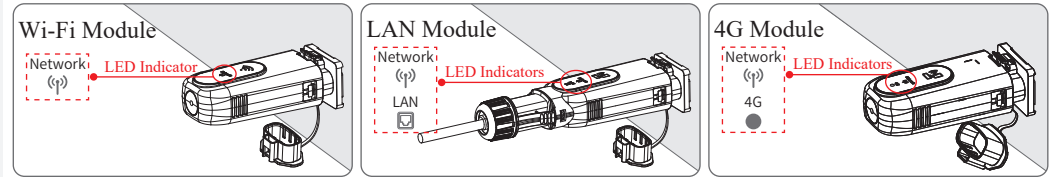
### LAN Module Installation



### 4G Module Installation (only applicable for certain models)



## 2 Indicator



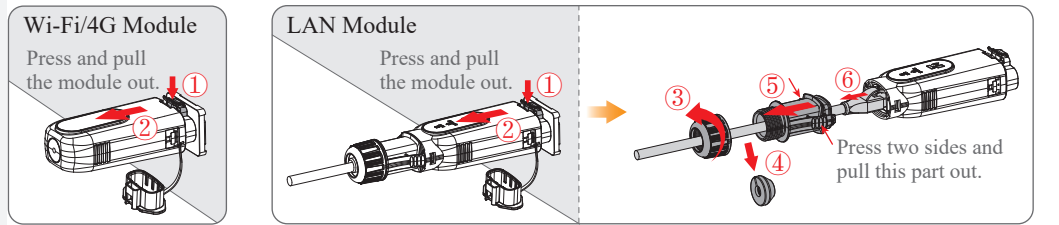
### • For Wi-Fi/LAN Module

Indicator	Status	Description
Network (p)	Steady Green	Normal status
	Steady Red	Inverter connection failure
	Steady Yellow	Router connection failure
	Steady Blue	Server connection failure
LAN (only LAN module)	Steady White	Physically connecting to LAN

### • For 4G Module

Indicator	Status	Description
Network (p)	Steady Green	Communication is OK
	Steady Red	Module initialization exception
	Steady Yellow	Initialization state
	Steady Blue	PDP network registration failed
4G ●	White flicker slowly	The power supply is normal
	White flicker quickly	Data communication

## 3 Removing the Module



As the technology is constantly updated and improved, the illustrations in this document are for reference only. And the background color of app screenshots does not represent the actual color. Contents including illustrations in this document are subject to change without notice.